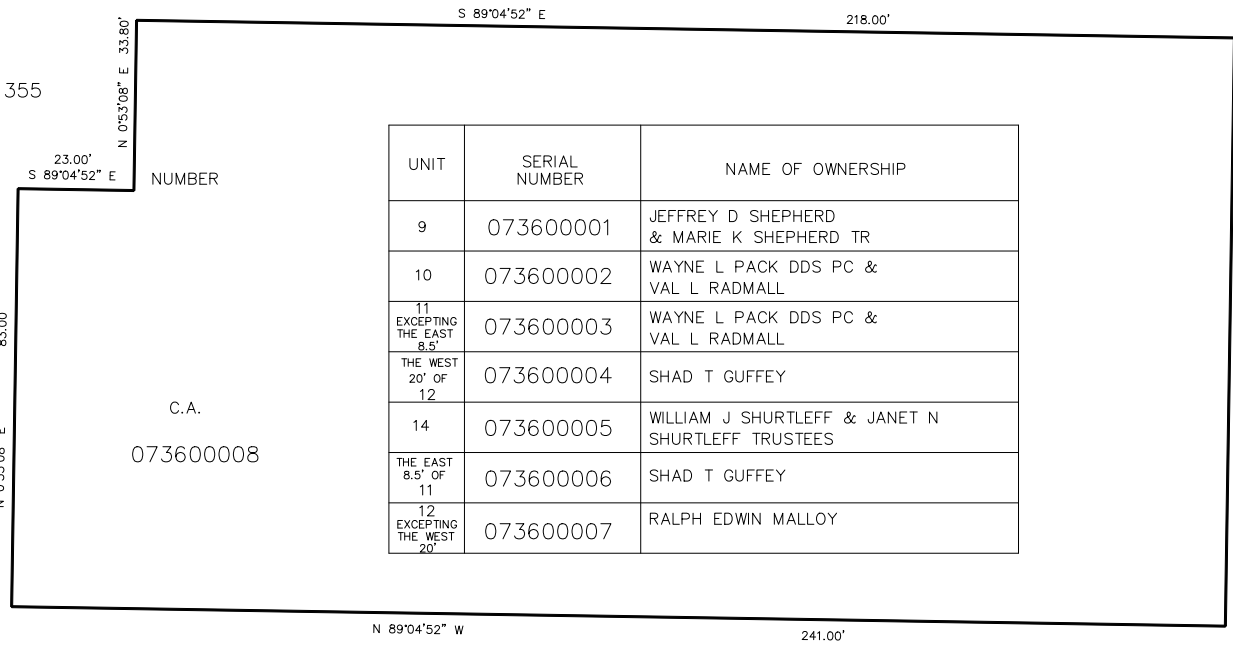


PART OF THE SW 1/4, SEC. 16, T.5N., R.1W., S.L.B. & M.
SOUTH POINTE PLAZA PHASE 3
 UNITS 11 – 14 AND AMENDED UNITS 9 & 10
 A CONDOMINIUM PROJECT
 IN WASHINGTON TERRACE CITY
 SCALE 1" = 20'

TAXING UNIT 255

SEE PAGE 37

SEE PAGE 355



UNIT	SERIAL NUMBER	NAME OF OWNERSHIP
9	073600001	JEFFREY D SHEPHERD & MARIE K SHEPHERD TR
10	073600002	WAYNE L PACK DDS PC & VAL L RADMALL
11 EXCEPTING THE EAST 8.5'	073600003	WAYNE L PACK DDS PC & VAL L RADMALL
THE WEST 20' OF 12	073600004	SHAD T GUFFEY
14	073600005	WILLIAM J SHURTLEFF & JANET N SHURTLEFF TRUSTEES
THE EAST 8.5' OF 11	073600006	SHAD T GUFFEY
12 EXCEPTING THE WEST 20'	073600007	RALPH EDWIN MALLOY

SEE PAGE 356

SEE PAGE 37

SEE PAGE 37

FOR COMPLETE ENG DATA SEE ORIGINAL DEDICATION PLAT IN BOOK 31, PAGE 57 OF RECORDS.

AMENDED UNITS 9 & 10 SEE ORIGINAL DEDICATION PLAT IN BOOK 32, PAGE 1 OF RECORDS.